

RESULTS

A total of 161 women were recruited in the current trial;
of them 140 women were included in the final analysis. Figure-

12

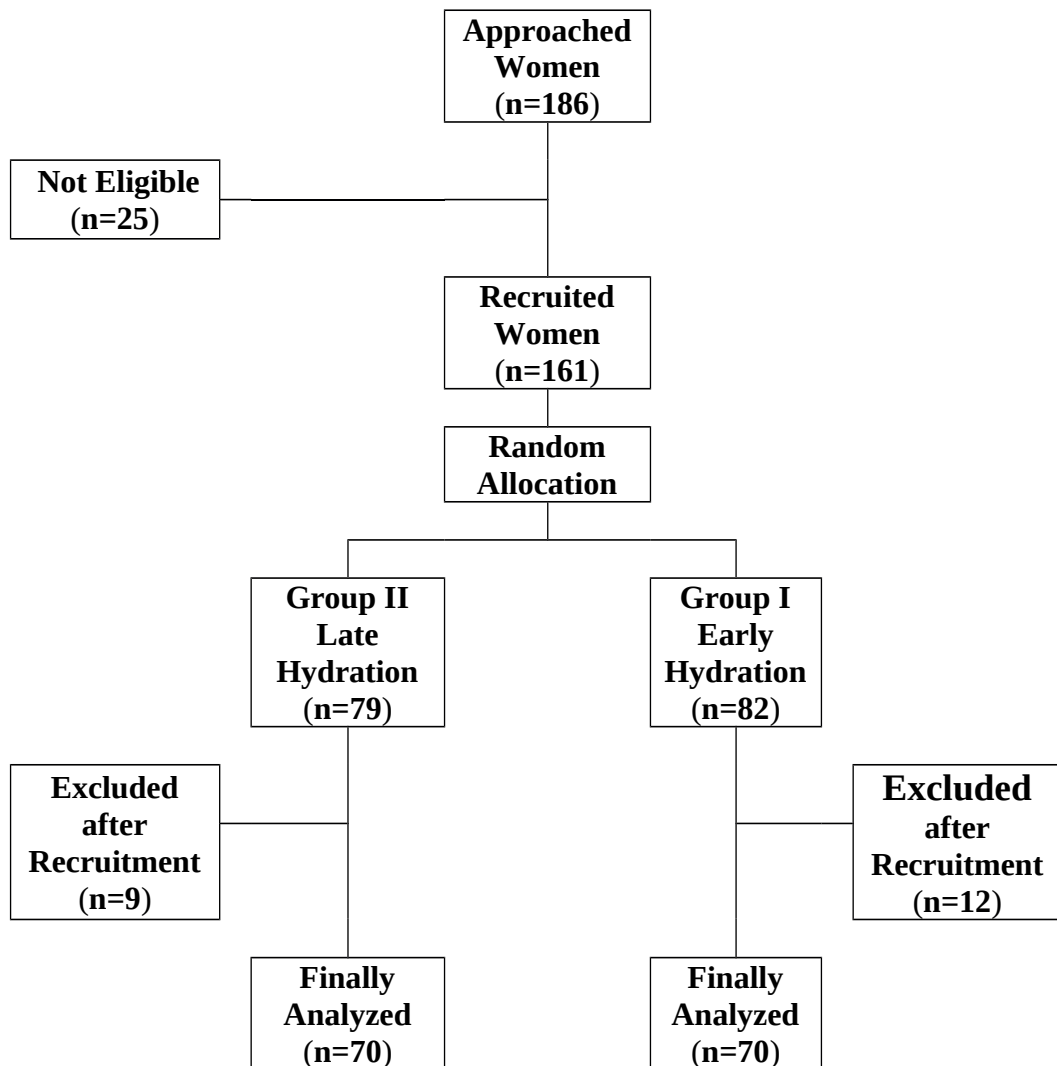


Figure (12): Shows a flow-diagram of the study course and the dropped-out cases.

Results □

Statistical presentation and analysis of the present study was conducted, using the mean, standard deviation, unpaired student t-test was used to compare between two groups in quantitative data and chi-square test was used to compare between groups in qualitative by (IBM SPSS Statistics for .Windows, Version 20.0. Armonk, NY: IBM Corp.)

:Significant level

Non significant $0.05 <$

significant $*0.05 >$

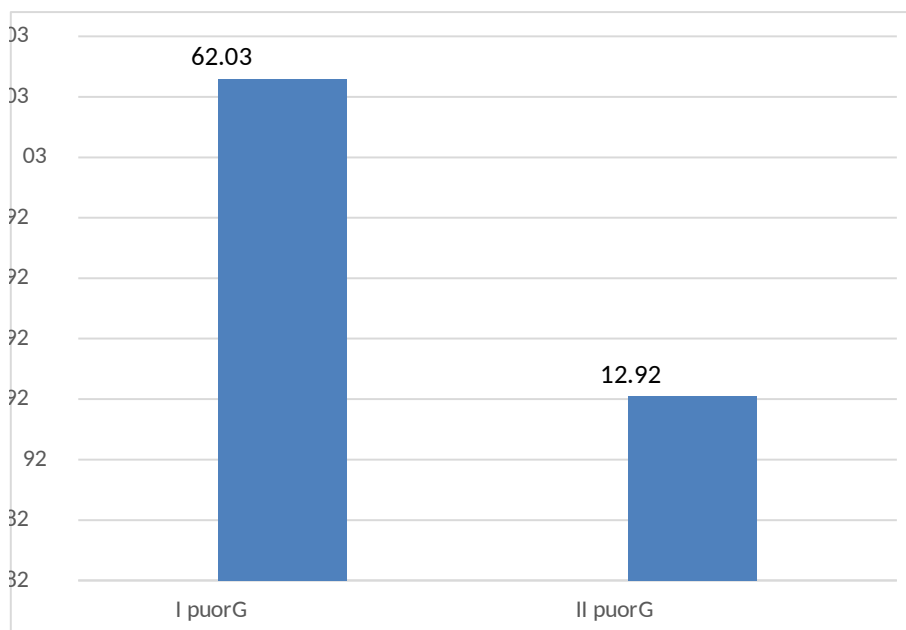
High significant $*0.001 >$

Results □

Table (2): Comparison between two groups as regard age (years)

T-test		Age (years)				Groups
P-value	t	SD	±	Mean	Range	
0.222	1.228	5.23	±	30.26	37 - 21	Group I
		4.94	±	29.21	37 - 22	Group II

There was no statistically significant difference between two groups as regard age when p-value was >0.05



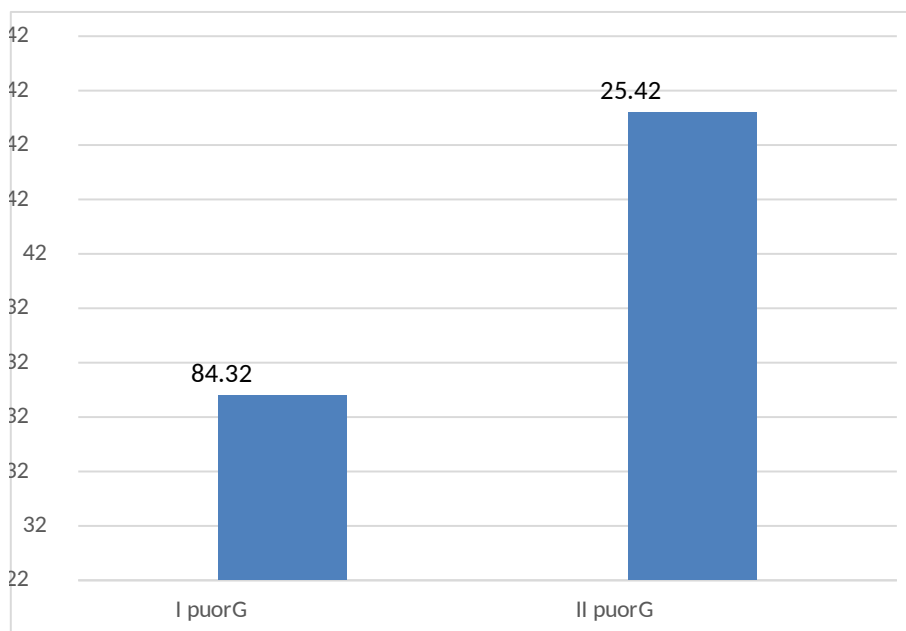
.Figure (13): Comparison between two groups as regard age (years)

Results □

Table (3): Comparison between two groups as regard BMI (kg/m²)

T-test		BMI (kg/m2)						Groups
P-value	t	SD	±	Mean	Range			
0.167	1.389	4.28	±	23.48	30	-	17.4	Group I
		4.58	±	24.52	30	-	18	Group II

There was no statistically significant difference between two groups as regard BMI when p-value was >0.05



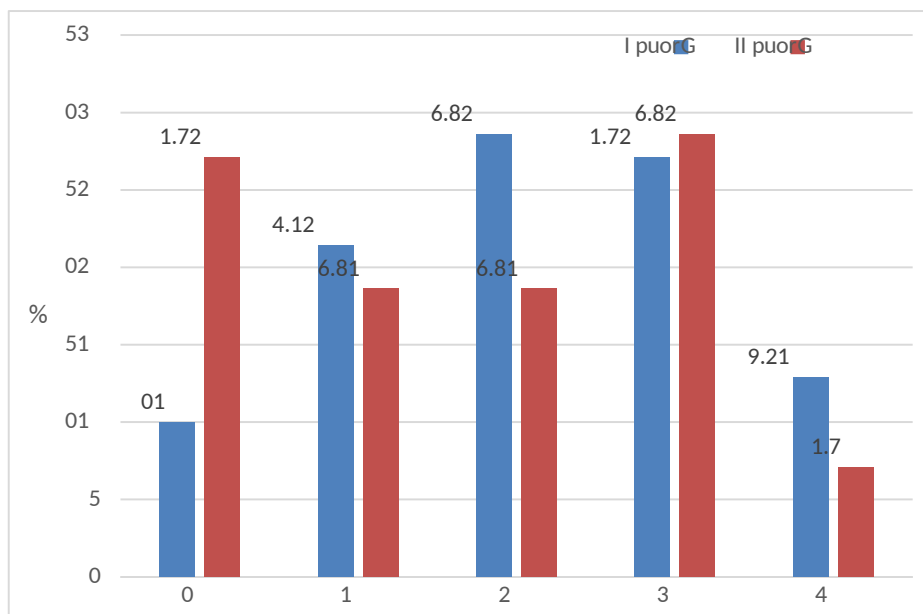
.Figure (14): Comparison between two groups as regard BMI (kg/m²)

Results □

Table (4): Comparison between two groups as regard Parity

Total		Group II		Group I		Parity
%	N	%	N	%	N	
18.6	26	27.1	19	10.0	7	0
20.0	28	18.6	13	21.4	15	1
23.6	33	18.6	13	28.6	20	2
27.9	39	28.6	20	27.1	19	3
10.0	14	7.1	5	12.9	9	4
100.0	140	100.0	70	100.0	70	Total
8.335						X ²
0.080						P-value
						Chi-square

There was statistically no significant difference between two groups as regard Parity when p-value was >0.05



.Figure (15): Comparison between two groups as regard Parity

Results □

Table (5): Comparison between two groups as regard .Gestational age (weeks)

T-test		Gestational age (weeks)				Groups
P-value	t	SD	±	Mean	Range	
0.088	1.719	1.12	±	39.07	40.86 - 37	Group I
		1.08	±	38.75	40.86 - 37	Group II

There was no statistically significant difference between .two groups as regard gestational age when p-value was >0.05

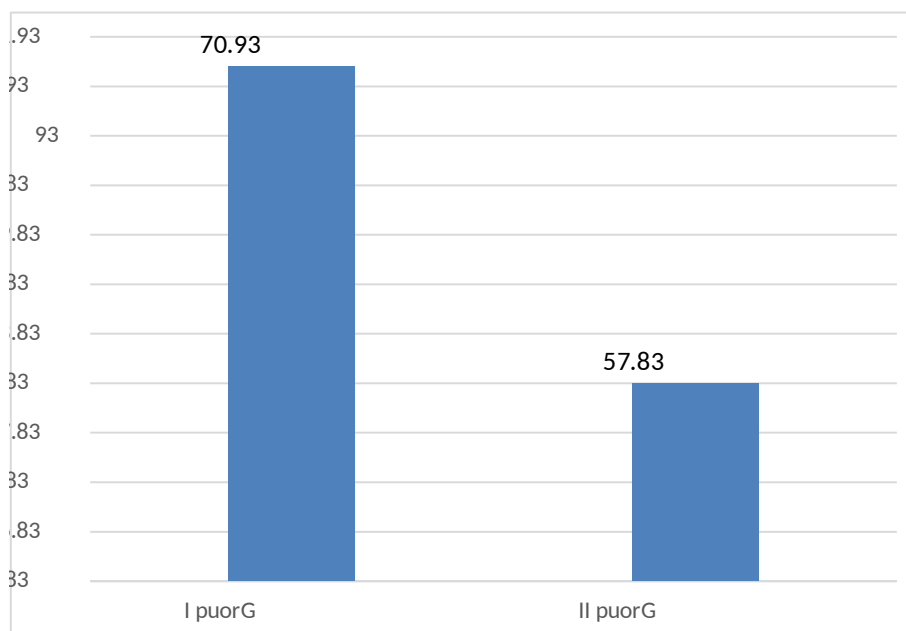


Figure (16): Comparison between two groups as regard Gestational age .(weeks)

Results □

Table (6): Comparison between two groups as regard .postoperative nausea and abdominal pain

Total		Group II		Group I		Nausea and abdominal pain
%	N	%	N	%	N	
6.4	9	5.7	4	7.1	5	Yes
93.6	131	94.3	66	92.9	65	No
100.0	140	100.0	70	100.0	70	Total
0.119						X ²
0.730						P-value
						Chi-square

There was no statistically significant difference between two groups as regard nausea and abdominal pain when p-value .was >0.05

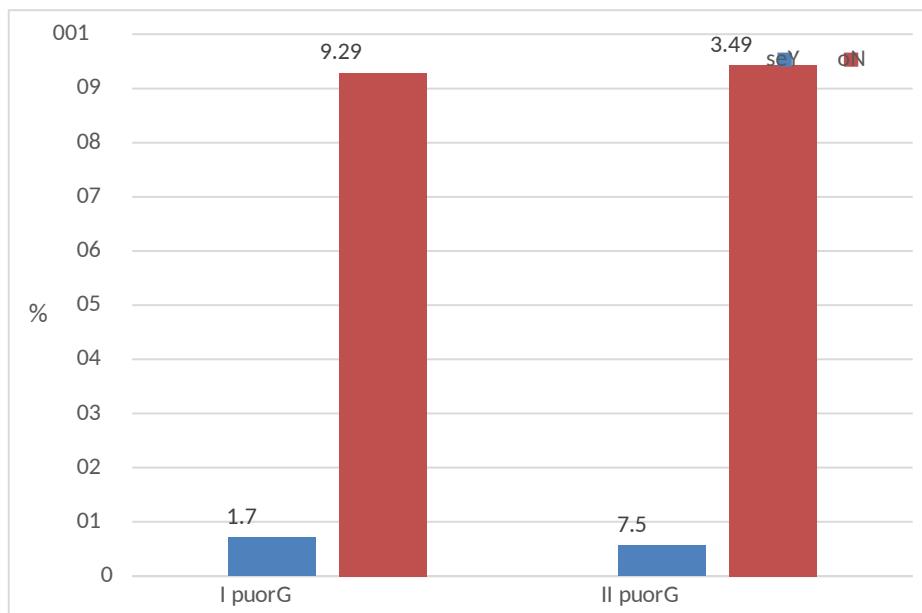


Figure (17): Comparison between two groups as regard Gestational age .(weeks)

Table (7): Comparison between two groups as regard postoperative vomiting

Results □

Total		Group II		Group I		Vomiting
%	N	%	N	%	N	
2.9	4	4.3	3	1.4	1	Yes
97.1	136	95.7	67	98.6	69	No
100.0	140	100.0	70	100.0	70	Total
1.029						X ²
0.310						P-value
						Chi-square

There was no statistically significant difference between .two groups as regard Vomiting when p-value was >0.05

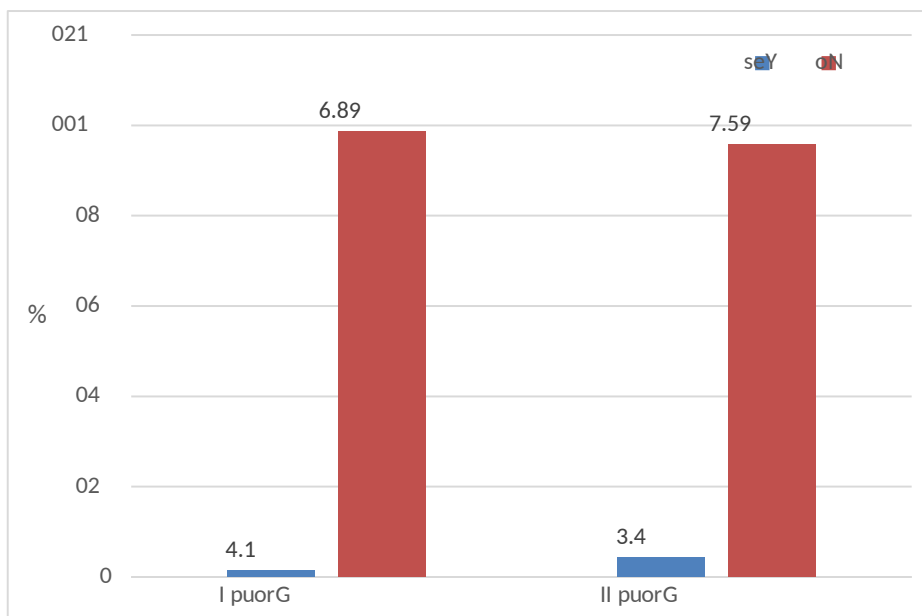


Figure (18): Comparison between two groups as regard postoperative vomiting

Results □

Table (8): Comparison between two groups as regard postoperative abdominal distension

Total		Group II		Group I		Abdominal distension
%	N	%	N	%	N	
20.0	28	21.4	15	18.6	13	Yes
80.0	112	78.6	55	81.4	57	No
100.0	140	100.0	70	100.0	70	Total
0.179						X ²
0.673						P-value
						Chi-square

There was no statistically significant difference between two groups as regard abdominal distension when p-value was >0.05

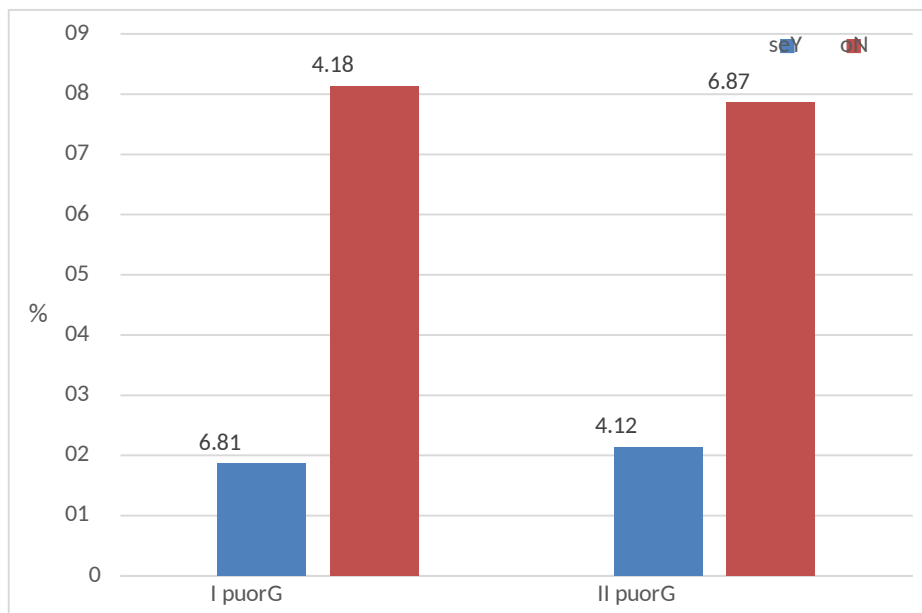


Figure (19): Comparison between two groups as regard postoperative abdominal distension

Results □

Table (9): Comparison between two groups as regard time to first heard intestinal sounds (hours)

T-test		Time to first heard intestinal sounds (hours)				Groups
P-value	t	SD	±	Mean	Range	
0.145	1.467	1	±	3.24	5 - 2	Group I
		0.96	±	3.49	6 - 2	Group II

There was no statistically significant difference between two groups as regard Time to first heard intestinal sounds .(hours)when p-value was >0.05

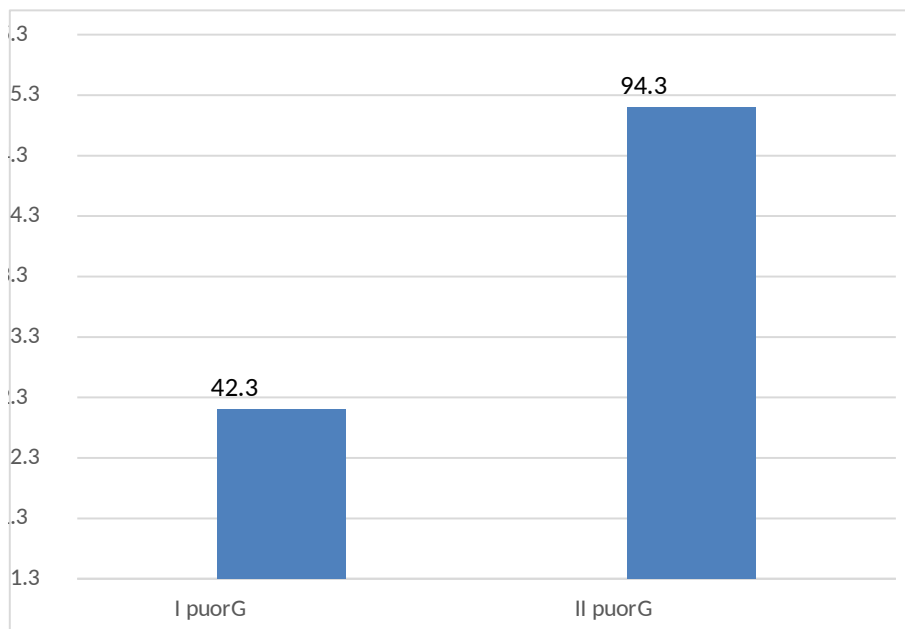


Figure (20): Comparison between two groups as regard time to first heard .intestinal sounds (hours)

Results □

Table (10): Comparison between two groups as regard Time to first flatus (hours)

T-test		Time to first flatus (hours)				Groups
P-value	t	SD	±	Mean	Range	
*0.028	2.223	1.02	±	4.21	6 - 3	Group I
		1.71	±	4.74	12 - 3	Group II

There was statistically significant difference between two groups as regard time to first flatus (hours) when p-value was $* < 0.05$

Group I (early oral hydration group) shows shorter .duration to first flatus than group II (late oral hydration group)

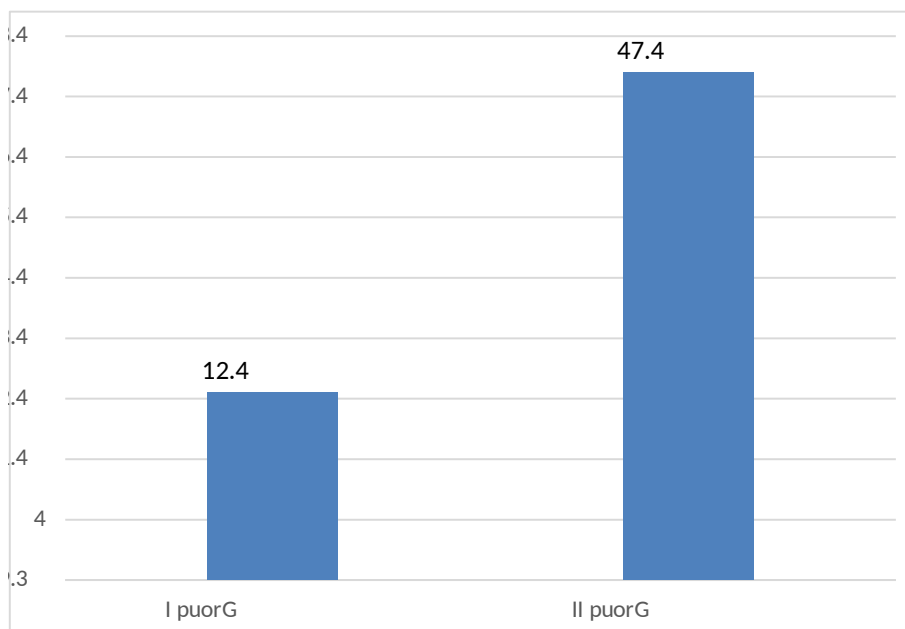


Figure (21): Comparison between two groups as regard Time to first .flatus (hours)

Table (11): Comparison between two groups as regard Time to first breast feeding (hours)

Results □

T-test		Time to first breast feeding (hours)				Groups
P-value	t	SD	±	Mean	Range	
0.614	0.505	0.50	±	1.49	2 - 1	
		0.50	±	1.44	2 - 1	Group II

There was no statistically significant difference between two groups as regard time to first breast feeding (hours) when p-value was >0.05

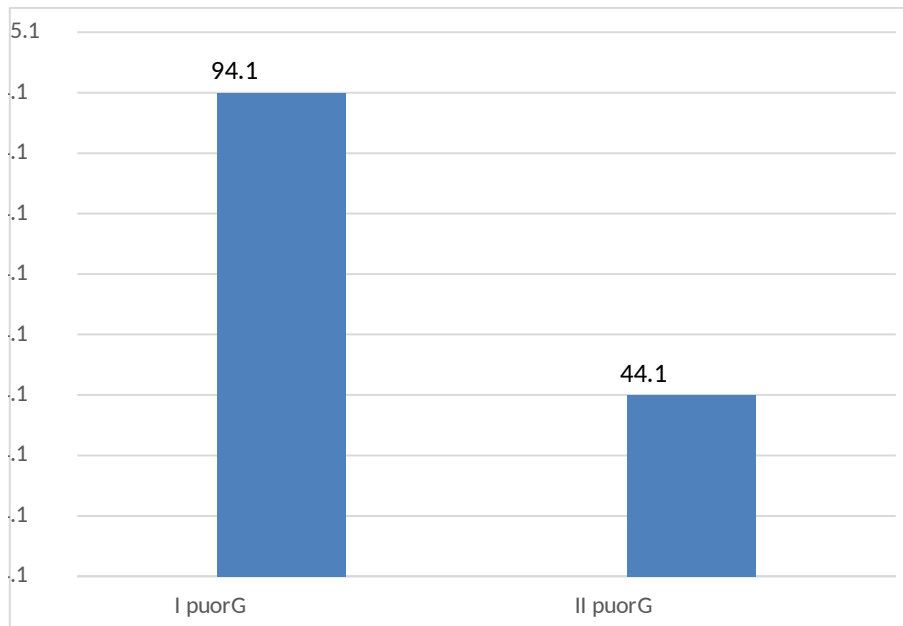


Figure (22): Comparison between two groups as regard Time to first .breast feeding (hours)

Results □

Table (12): Comparison between two groups as regard postoperative hospital stay (hours)

Total		Group II		Group I		Postoperative hospital stay (hours)
%	N	%	N	%	N	
70.0	98	61.4	43	78.6	55	hours 24
30.0	42	38.6	27	21.4	15	hours 24 <
100.0	140	100.0	70	100.0	70	Total
4.898						X ²
*0.027						P-value
						Chi-square

There was statistically significant difference between two groups as regard Postoperative hospital stay (hours) when p-value was <0.05

Group I (early oral hydration group) shows shorter duration of postoperative hospital stay than group II (late oral hydration group)

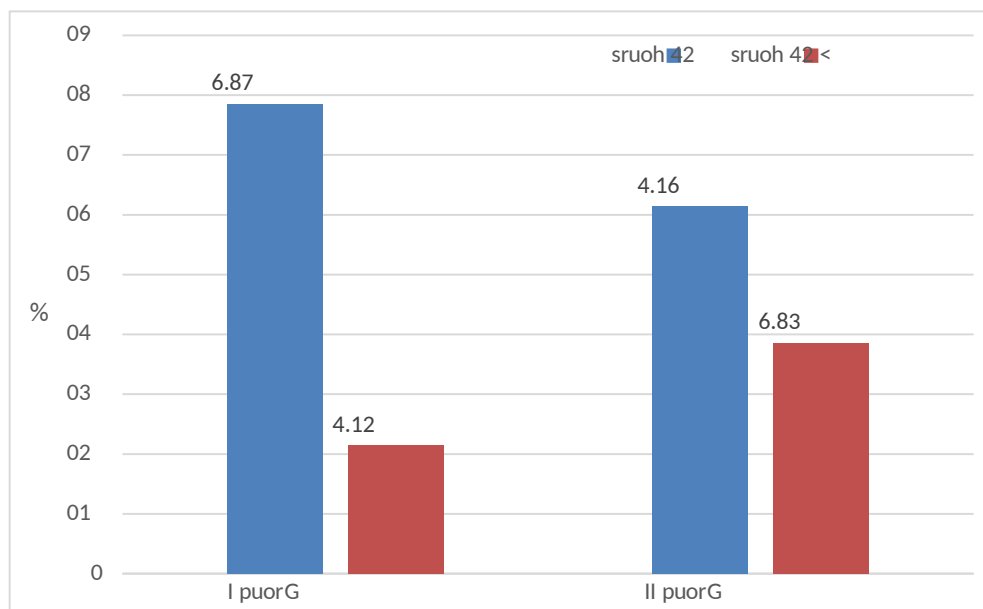


Figure (23): Comparison between two groups as regard postoperative hospital stay (hours)

Table (13): Comparison between two groups as regard overall satisfaction grade

Results □

Total		Group II		Group I		Overall satisfaction grade
%	N	%	N	%	N	
65.7	92	55.7	39	75.7	53	Very satisfied/satisfied
34.3	48	44.3	31	24.3	17	Otherwise
100.0	140	100.0	70	100.0	70	Total
6.214						X ²
*0.013						P-value
						Chi-square

There was statistically significant difference between two groups regard Overall satisfaction grade when p-value was $. * < 0.05$

Group I (early oral hydration group) shows more overall .satisfaction than group II(late oral hydration group)

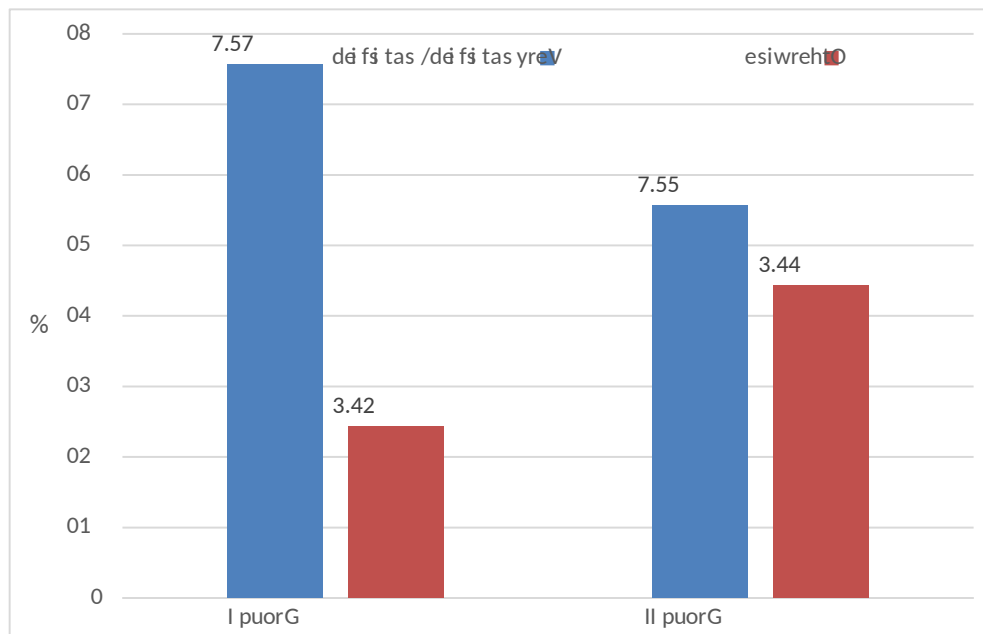


Figure (24): Comparison between two groups as regard overall satisfaction .grade

Results □
