

Figure 1. Flowchart of the participants included in the trial

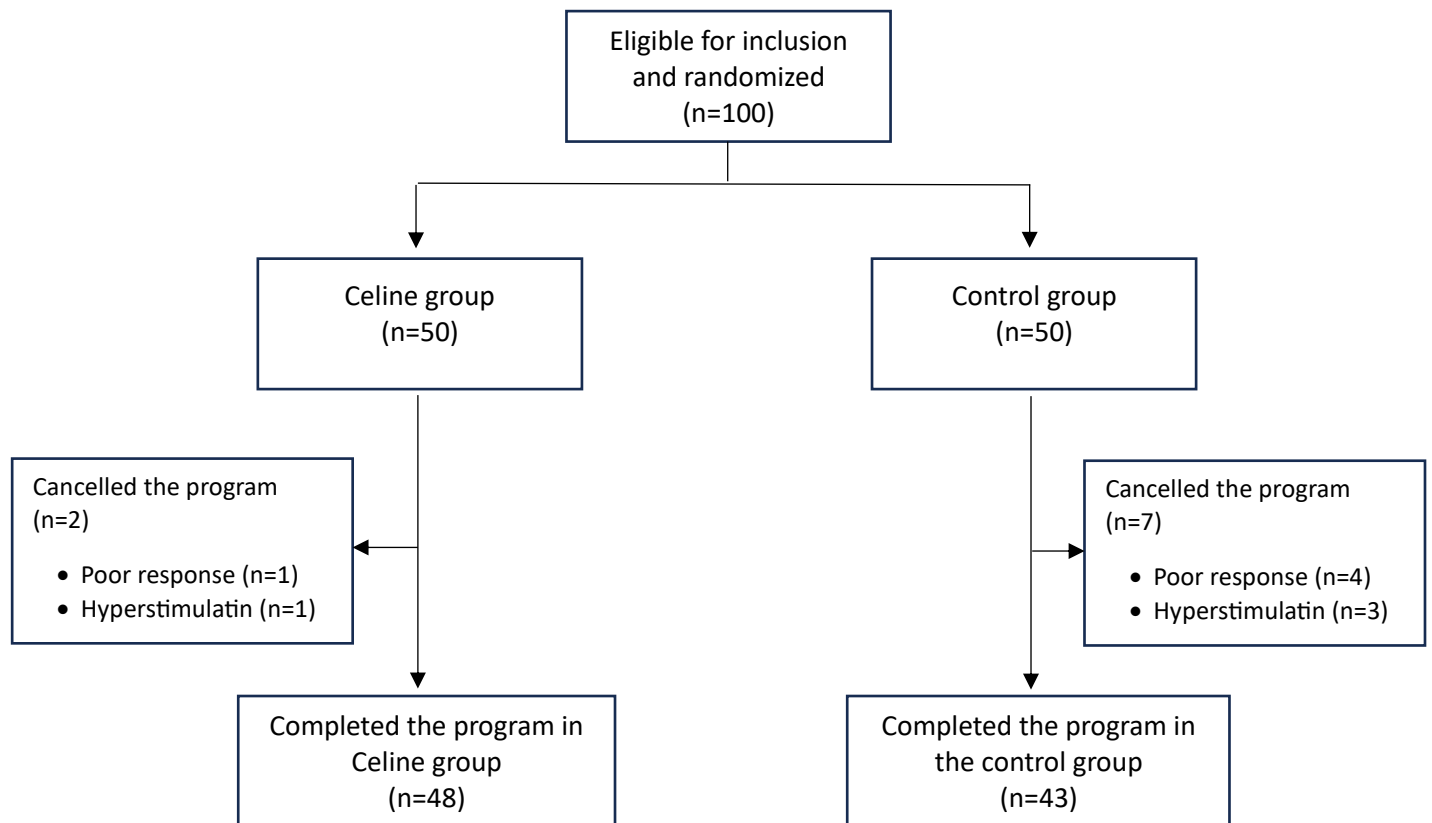


Table 1. Baseline characteristics of women included in the study (n=100).

Baseline characteristics	n (%)	
Age category		
<i>20 - 25</i>	15 (15)	
<i>26 - 30</i>	26 (26)	
<i>31 - 35</i>	32 (32)	
<i>36 - 40</i>	27 (27)	
Type of infertility		
<i>Primary infertility</i>	77 (77)	
<i>Secondary infertility</i>	23 (23)	
	Celine Group	Control group
	n (%)	n (%)
Participation		
<i>Completed the program</i>	48 (96)	43 (86)
<i>Cancelled</i>	2 (4)	7 (14)
Reason of cancellation		
<i>Poor response</i>	1 (50)	4 (57)
<i>Hyperstimulation</i>	1 (50)	3 (43)

Table 2. The effect of Celine supplementation on primary outcomes.

	Celine Group	Control group	
Primary outcomes	n (%)	n (%)	P-value
Preovulatory follicle count	<i>n=50</i>	<i>n=50</i>	
< 1	1 (2)	4 (8)	
1 - 4	1 (2)	3 (6)	
5 - 8	11 (22)	11 (22)	
9 - 12	21 (42)	14 (28)	0.014
13 - 16	14 (28)	6 (12)	
17 - 20	2 (4)	11 (22)	
> 20	0 (0)	1 (2)	
Oocytes retrieved	<i>n=48</i>	<i>n=43</i>	
< 1	1 (2)	1 (2)	
1 - 5	10 (21)	21 (48)	
6 - 10	29 (60)	16 (38)	0.003
11 - 15	8 (17)	2 (5)	
16 - 20	0 (0)	3 (7)	
Mature oocytes (MII) retrieved	<i>n=48</i>	<i>n=43</i>	
< 1	1 (2)	4 (9)	
1 - 2	6 (12)	17 (39)	
3 - 4	15 (31)	8 (19)	0.025
5 - 6	16 (33)	8 (19)	
7 - 8	5 (11)	3 (7)	
9 - 10	5 (11)	3 (7)	
Grade 1 embryos	<i>n=48</i>	<i>n=43</i>	
0	4 (8)	16 (38)	
1	0 (0)	9 (21)	
2	14 (29)	7 (16)	
3	13 (28)	9 (21)	
4	8 (17)	1 (2)	< 0.001
5	6 (12)	0 (0)	
6	3 (6)	0 (0)	
7	0 (0)	1 (2)	
Embryo transfers	<i>n=48</i>	<i>n=43</i>	
0	4 (8)	8 (19)	
1	1 (2)	5 (12)	
2	15 (31)	16 (37)	0.025
3	28 (59)	13 (30)	
4	0 (0)	1 (2)	

Table 3. The effect of Celine supplementation on secondary outcomes.

	Celine Group (n=50)	Control group (n=50)	
Secondary outcomes	n (%)	n (%)	P-value
Gonadotropin vials received			
<i>< 15</i>	7 (14)	6 (12)	< 0.001
<i>15 – 25</i>	33 (66)	14 (28)	
<i>26 – 35</i>	9 (18)	20 (40)	
<i>36 – 45</i>	1 (2)	10 (20)	
Ovarian stimulation duration (days)			
<i>6 - 8</i>	12 (24)	7 (14)	0.006
<i>9 - 11</i>	32 (64)	22 (44)	
<i>12 - 14</i>	6 (12)	17 (34)	
<i>> 14</i>	0 (0)	4 (8)	
Pregnancy test			
<i>Positive</i>	12 (24)	2 (4)	0.004
<i>Negative</i>	38 (76)	48 (96)	