

Table 1: Sociodemographics and baseline characteristics

Demographic data	Placebo Group (n=41)	Dexmedetomidine Group (n=41)	Test value	P-value
Age (years)				
Mean±SD	38.71±8.36	39.68±7.50	t=-0.556	0.580
Range	22–50	29–50		
Sex				
Female	25 (61%)	23 (56.1%)	x ² =0.201	0.654
Male	16 (39%)	18 (43.9%)		
Height (cm)				
Mean±SD	159.63±6.89	159.73±4.39	t=-0.076	0.939
Range	150–180	155–173		
Weight (kg)				
Mean±SD	75.73±11.32	75.73±7.55	t=0.000	1.000
Range	60–95	60–90		
BMI (kg/M²)				
Mean±SD	28.94±3.76	29.76±2.58	t=1.149	0.254
Range	22.22–34.67	26.03–34.87		
ASA physical status				
II	39 (95.1%)	39 (95.1%)	x ² =0.000	1.000
III	2 (4.9%)	2 (4.9%)		

Table 2: Liver functions

		Placebo Group (n=41)	Dexmedetomidine Group (n=41)	Test value	p-value
ALT	Preoperative	26.95±13.91	28.90±13.82	-0.637	0.526
	After 24 h	38.59±8.40	35.05±7.60	2.001	0.049*
	After 48 h	49.78±17.66	48.07±14.57	0.478	0.634
AST	Preoperative	22.24±7.72	21.68±8.45	0.314	0.754
	After 24 h	38.22±10.49	28.83±8.75	4.403	<0.001*
	After 48 h	46.17±10.59	39.85±9.30	2.869	0.005*
GGT	Preoperative	40.85±18.95	43.24±12.99	-0.666	0.507
	After 24 h	61.95±10.66	52.39±12.71	3.692	<0.001*
	After 48 h	96.15±19.55	92.41±14.16	0.990	0.325
Albumin	Preoperative	4.28±0.44	4.43±0.83	-0.989	0.325
	After 24 h	3.57±0.35	3.79±0.70	-1.800	0.076
	After 48 h	3.46±0.36	3.47±0.79	-0.072	0.943
Total bilirubin	Preoperative	0.59±0.20	0.57±0.26	0.397	0.692
	After 24 h	0.59±0.18	0.48±0.22	2.620	0.011*
	After 48 h	0.57±0.24	0.37±0.16	4.513	<0.001*
Direct bilirubin	Preoperative	0.25±0.11	0.26±0.09	-0.667	0.507
	After 24 h	0.15±0.05	0.13±0.03	2.196	0.031*
	After 48 h	0.13±0.05	0.08±0.05	4.855	<0.001*
LDH	Preoperative	162.68±87.52	162.83±65.45	-0.009	0.993
	After 24 h	195.07±88.32	178.56±64.73	0.966	0.337
	After 48 h	198.15±76.86	182.37±65.59	1.000	0.320

Table 3: Ramsay sedation score and patient satisfaction score

	Placebo Group (n=41)	Dexmedetomidine Group (n=41)	z-Test value	p-value
Sedation score (Ramsay score)	1.46±0.60	2.88±0.75	-9.471	<0.001*
Satisfaction score	4.59±0.81	8.02±0.72	-20.330	<0.001*

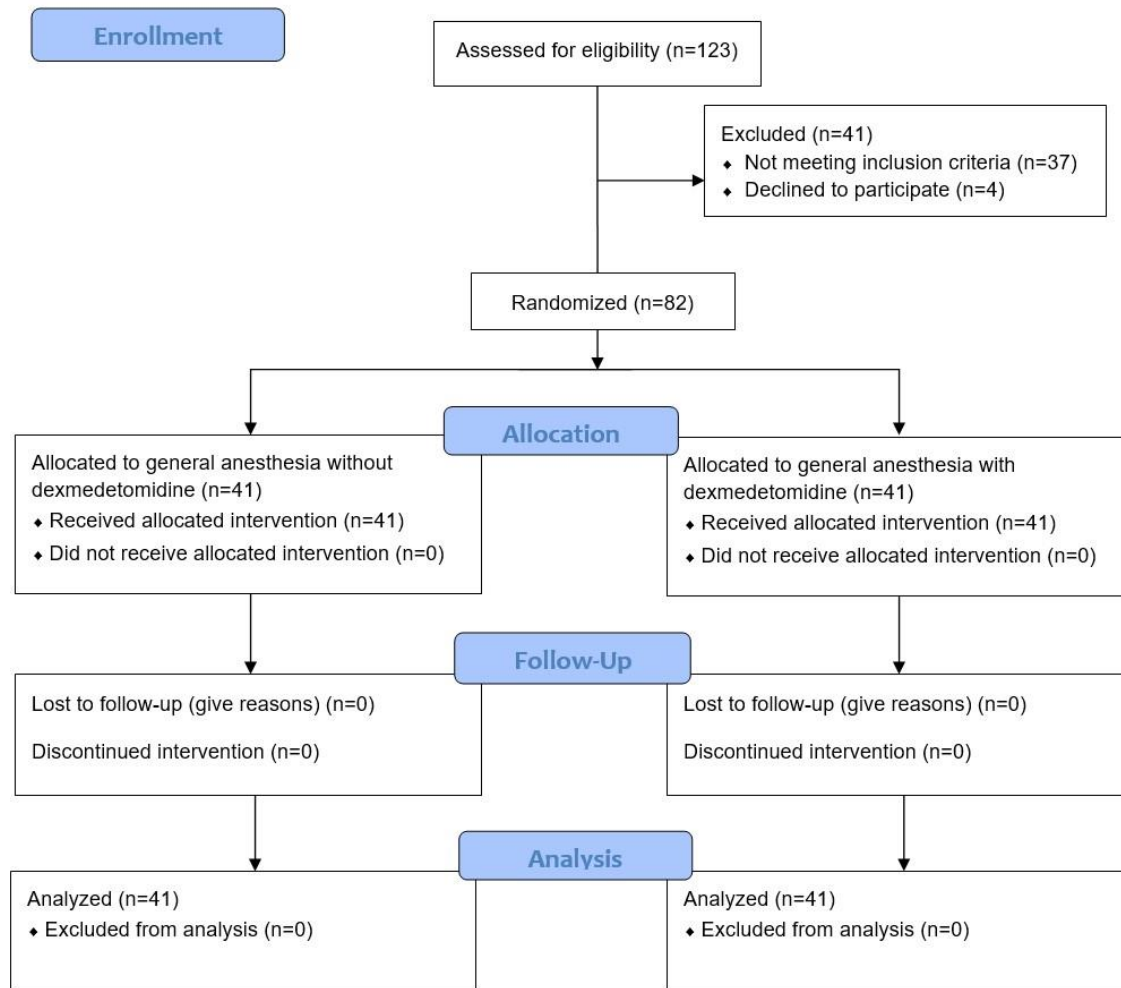
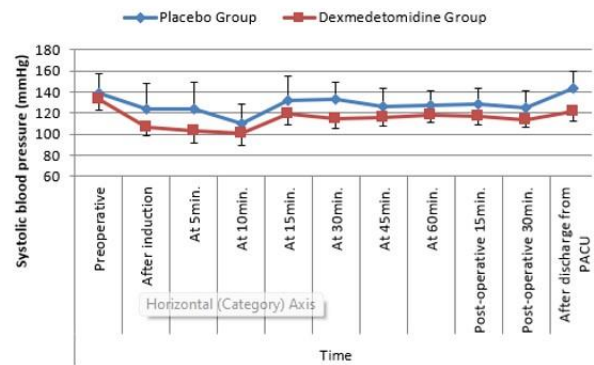
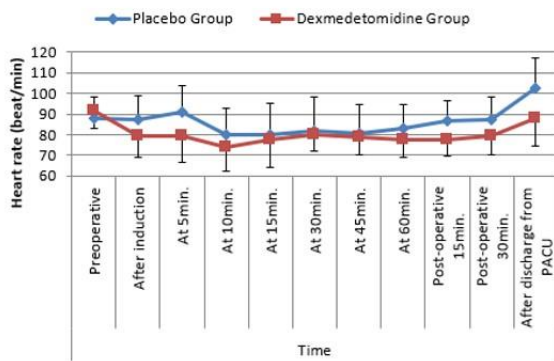
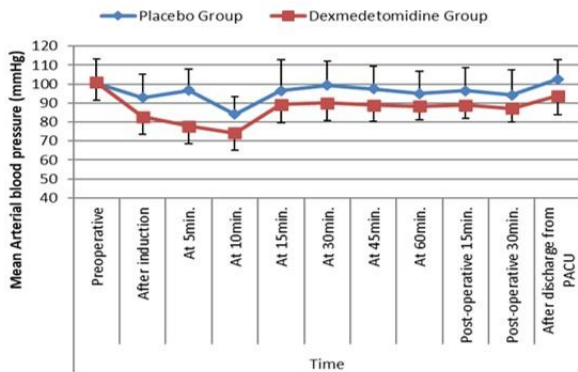
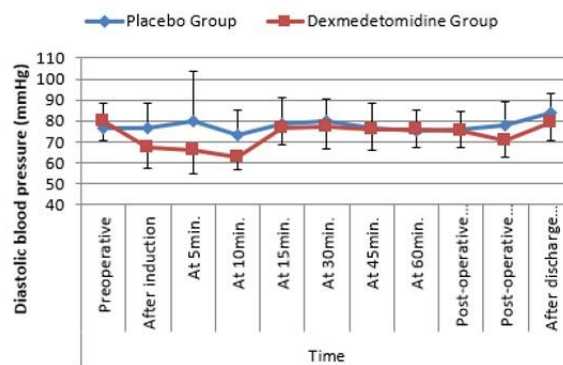


Figure 1: CONSORT flow chart of the trial



A B



C D

Figure 2: Hemodynamics