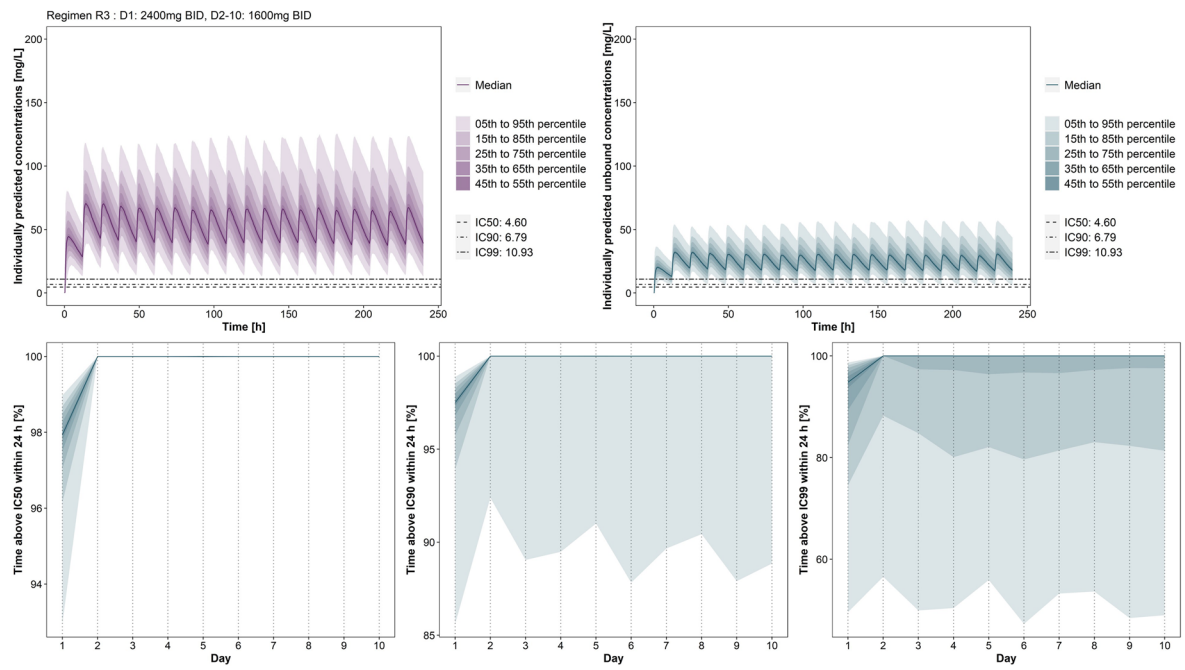


Extended Data Fig. 1 | Predicted Ct value from GPC and L genes vs. time. Observed (points) and individually predicted (lines) time courses of the Ct values for the GPC gene (upper panel) and L gene (lower panel) using the linear mixed effect models for ribavirin (red) and favipiravir (purple).



Extended Data Fig. 2 | Simulation with Regimen R3. Upper panel: Individually predicted concentrations (left) and individually predicted unbound concentrations (right) vs. time. Lower panel: Percentage of time above IC50 (left), IC90 (middle) or IC99 (right) within 24h per day.