

A clinical trial to assess the role of repetitive Transcranial Magnetic Stimulation in Smoking Cessation in an Egyptian Sample

Measure	Parameter	Study group (n=27)	Control group (n=27)	<i>Aymptotic sig. p</i>	Test
Number of subjects N (%)	Male	27 (100.0)	25 (92.6)		
	Female	0	2 (7.4)		
Age	Median	31	37	0.651	Mann-Whitney U
Marital state N (%)	Single	13 (48.1)	9 (33.3)	0.365	χ^2
	Married	14 (51.9)	17 (63.0)		
	Divorced	0	1 (3.7)		
Past medical (NCD)/surgical history N (%)	NCD	8 (29.6)	1 (3.7)	0.026*	χ^2
	Surgical Hx	4 (14.8)	8 (29.6)		
	Uneventful	14 (51.9)	18 (66.7)		
Family medical (NCD) history N (%)	Present	18 (66.7)	20 (74.1)	0.874	χ^2
	Not present	6 (22.2)	6 (22.2)		
Family smoking status 1 st degree	Present	19 (70.4)	23 (85.2)	0.370	χ^2
	Not present	5 (18.5)	3 (11.1)		

N (%)					
Family smoking status	Present	20 (74.1)	24 (88.9)	0.32	χ^2
Other	Not present	4 (14.8)	2 (7.4)	9	
N (%)					
Tobacco form used	Cigarettes	18 (66.7)	20 (74.1)	0.82	χ^2
N (%)	only			2	
	Shisha only	1 (3.7)	1 (3.7)		
	Both	8 (29.6)	6 (22.2)		
Cigarettes/day	N (%)	26	25	0.34	Mann-Whitney U
	Median	20	20	7	
Shisha /day	Does not smoke	16 (59.3)	19 (70.4)	0.66	χ^2
N (%)				6	
	<1/day	6 (22.2)	6 (22.2)		
	1-5/day	1 (3.7)	0 (0)		
	>5/day	2 (7.4)	1 (3.7)		
Trials of abstinence	Never	7 (25.9)	10 (37.0)	0.41	χ^2
N (%)	1-5	15 (55.6)	12 (44.4)	0	
	>5	1 (3.7)	3 (11.1)		
Length of longest trial of abstinence	Never abstained	7 (25.9)	10 (37.0)	0.08	χ^2
N (%)				4	
	Less than 1 month	4 (14.8)	9 (33.3)		

	More than 1 month	10 (37.0)	4 (14.8)		
Age at starting smoking	Median	17	15.50	0.34 1	Mann Whitney U
Pack years		9	9	0.62 0	
FTND pretreatment		3	5	0.26 2	
Baseline CO ppm		15	13	0.25 3	

Table 1 Participant characteristics NCD: Non-communicable disease; FTND: Fagerstrom Test for Nicotine dependence; CO ppm: Carbon Monoxide Parts Per Million

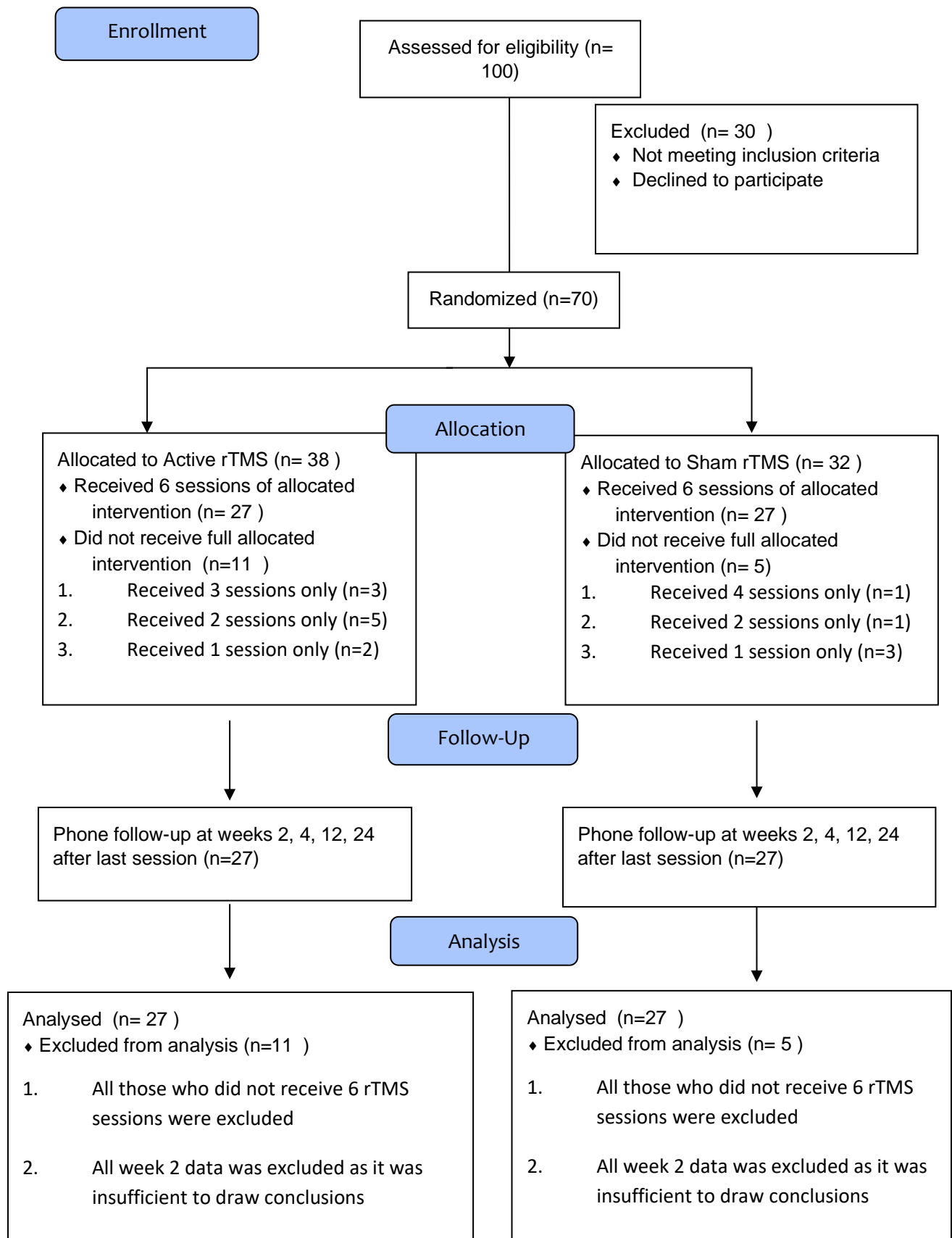


Figure 1 Study flow diagram

	Number analyzed	Test statistic	Std. error	Negative ranks (mean)	Positive ranks (mean)	Ties	Standardized test statistic <i>Z</i>	Asymptotic significance <i>p</i>
Study	23	27.500	24.817	15 (10.83)	4 (6.88)	4	-2.720	0.007
Control	23	102.000	30.753	12 (12.58)	10 (10.20)	1	-0.797	0.426

Related-Samples Wilcoxon Signed Rank Test

Table 2 Carbon monoxide reading at baseline and end of treatment sessions

	Number analyzed	Test statistic	Std. error	Negative ranks (mean)	Positive ranks (mean)	Ties	Standardized test statistic <i>Z</i>	Asymptotic significance <i>p</i>
Study	25	3	19.125	13 (9.50)	2 (1.50)	9	-3.339	0.001
Control	22	20	26.606	18 (10.56)	2 (10.00)	2	-3.195	0.001

Related-Samples Wilcoxon Signed Rank Test

Table 3 Cigarette consumption at baseline and end of follow-up period

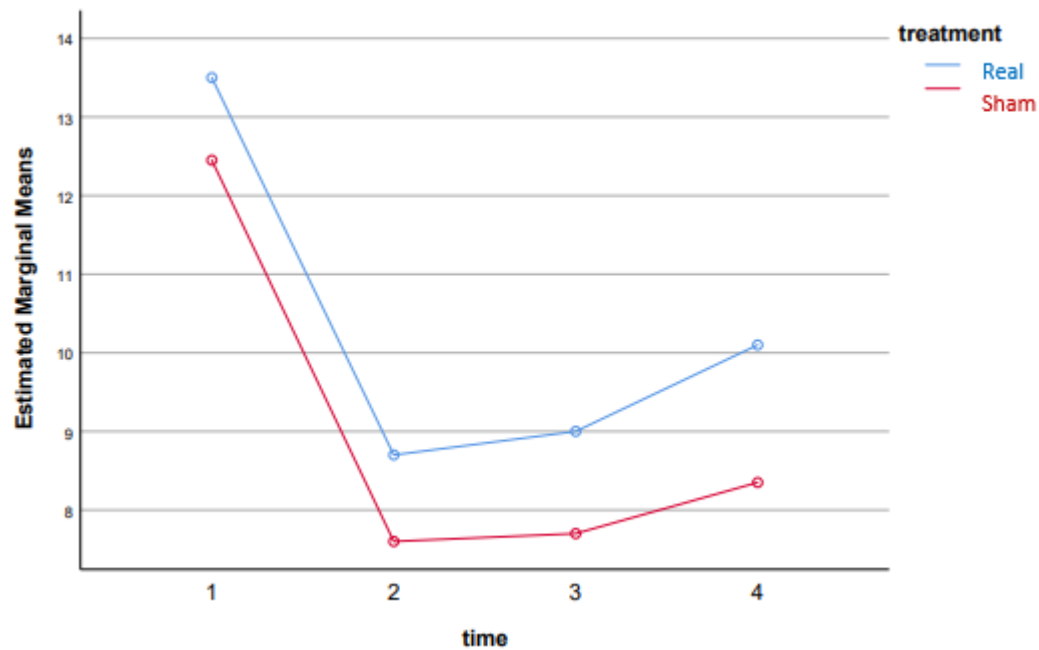


Figure 2 Repeated measures of ATCQ-12 Emotionality over time 1:ATCQ-12 Emotionality marginal mean at baseline; 2: ATCQ-12 Emotionality marginal mean at week 4; 3: ATCQ-12 Emotionality marginal mean at week 12; 4: ATCQ-12 Emotionality marginal mean at week 24

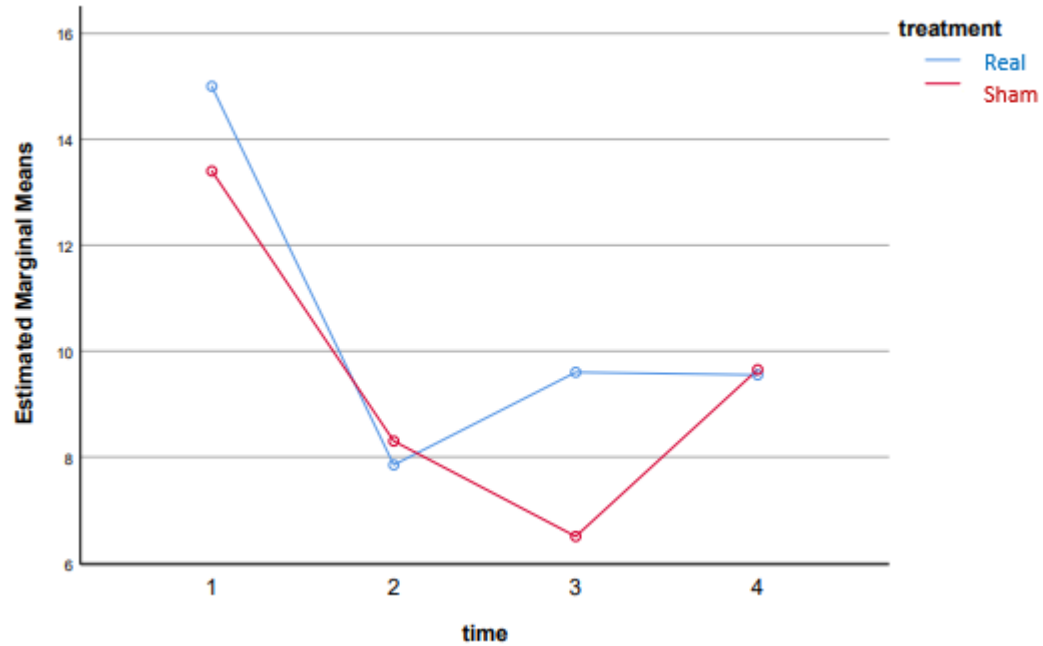


Figure 3 Repeated measures of ATCQ-12 Expectancy over time 1:ATCQ-12 Expectancy marginal mean at baseline; 2: ATCQ-12 Expectancy marginal mean at week 4; 3: ATCQ-12 Expectancy marginal mean at week 12; 4: ATCQ-12 Expectancy marginal mean at week 24

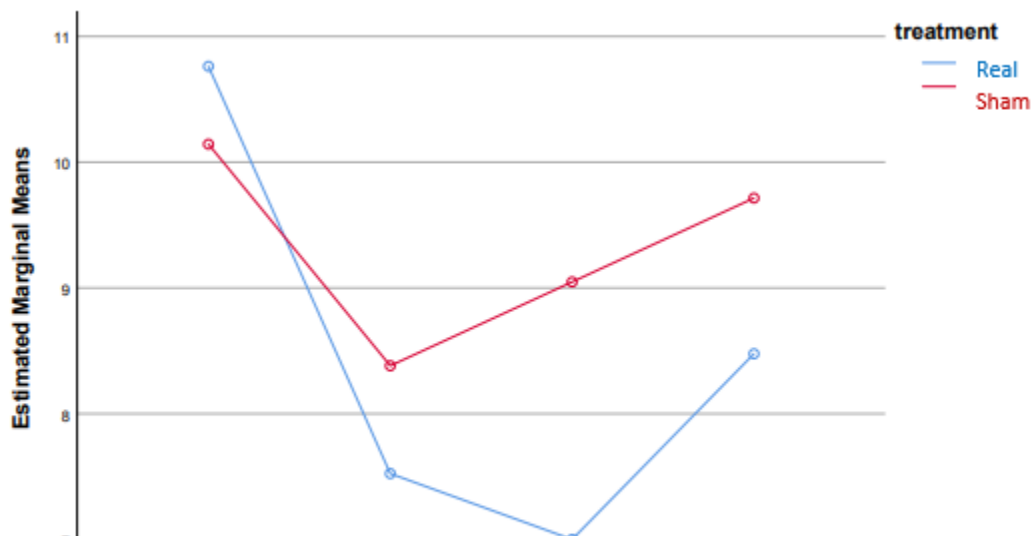


Figure 4 Repeated measures of ATCQ-12 Compulsivity over time 1:ATCQ-12 Compulsivity marginal mean at baseline; 2: ATCQ-12 Compulsivity marginal mean at week 4; 3: ATCQ-12 Compulsivity marginal mean at week 12; 4: ATCQ-12 Compulsivity marginal mean at week 24

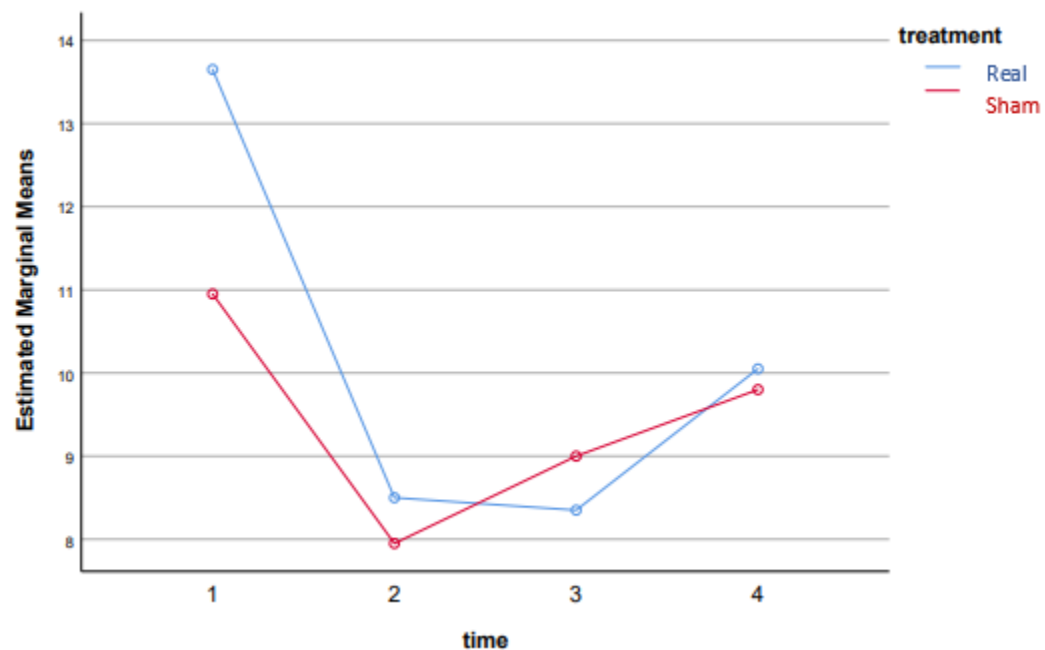


Figure 5 Repeated measures of ATCQ-12 Purposefulness over time 1:ATCQ-12 Purposefulness marginal mean at baseline; 2: ATCQ-12 Purposefulness marginal mean at week 4; 3: ATCQ-12 Purposefulness marginal mean at week 12; 4: ATCQ-12 Purposefulness marginal mean at week 24